



**Technical Manual: 30A228**  
**REVISED DATE: FEBURAY 2010**

---

**SUBJECT**

---

**UNITOP I FRYER**  
**PARTLOW TEMPERATURE CONTROL CONVERSION**

**I PURPOSE:** The Partlow Corporation no longer manufactures the 0—450° Model LF4J560A Partlow Temperature Control used in Uni-Top I Electric Fryers manufactured By Ultrafryer Systems from 1972 to 1986 and existing stock of replacement parts for this control has been depleted. Therefore, Uni-Top I fryers must be modified to operate with a separate **THERMOSTAT** and **HI-LIMIT SWITCH** upon **FAILURE** of a Partow. Temperature Control or Temperature Probe. A Partow Temperature Control Conversion Kit, PN 12C556 can be obtained from Ultrafryer Systems by calling (800) 331-5013 and installed according to procedures contained in this Technical Information Letter.

**II PRECAUTIONS:**

A.



A Partow Temperature Control Conversion **MUST** be accomplished by a qualified technician or service agent according to instructions contained herein.

B. Electric power, 120 volts and 208/240 volts to the fryer must be turned **OFF** prior to starting this Conversion.

---

**Partow Conversion Kit**

---



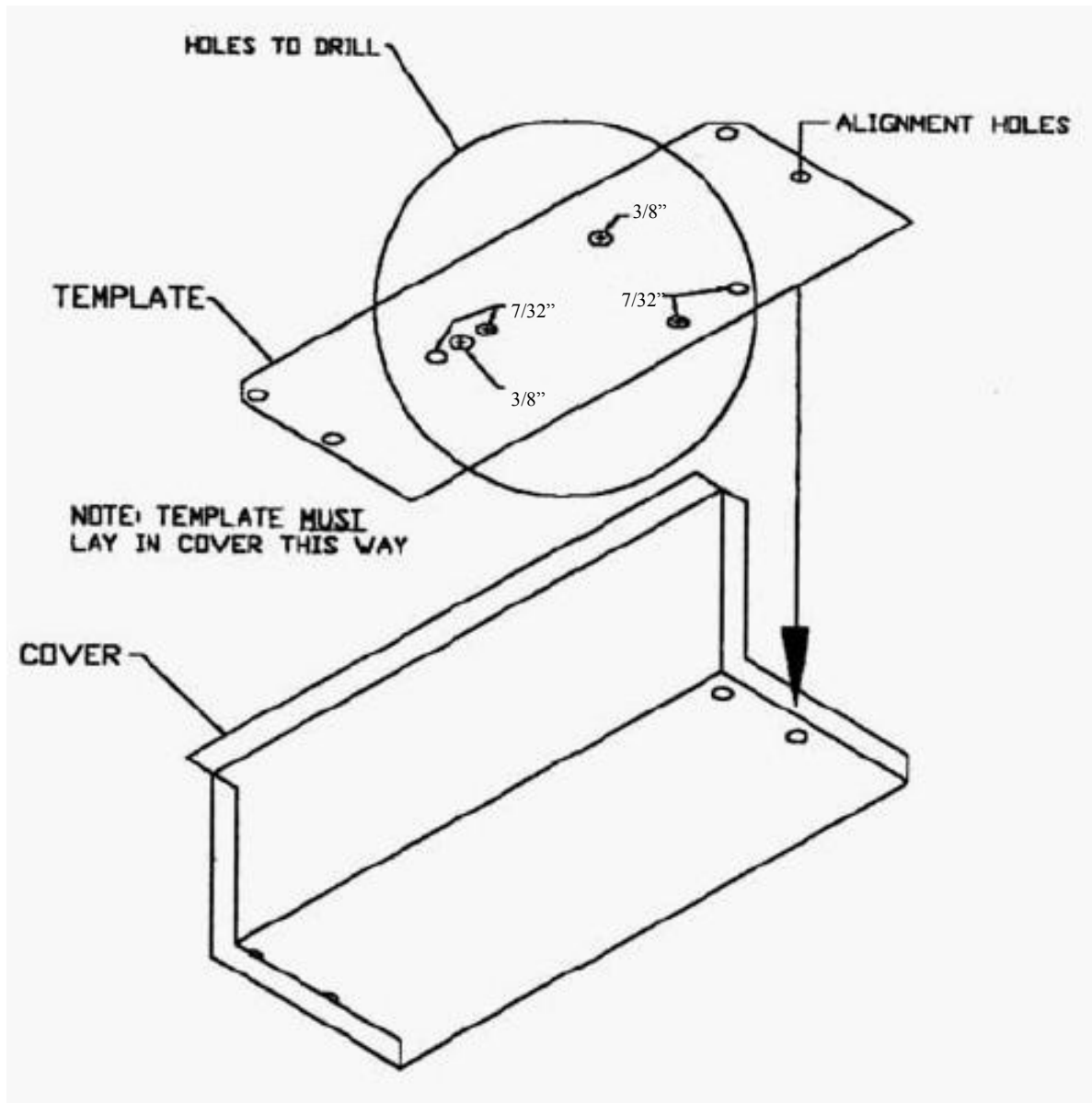
## Partlow Conversion Instructions

1. Before installing Partlow Conversion Kit



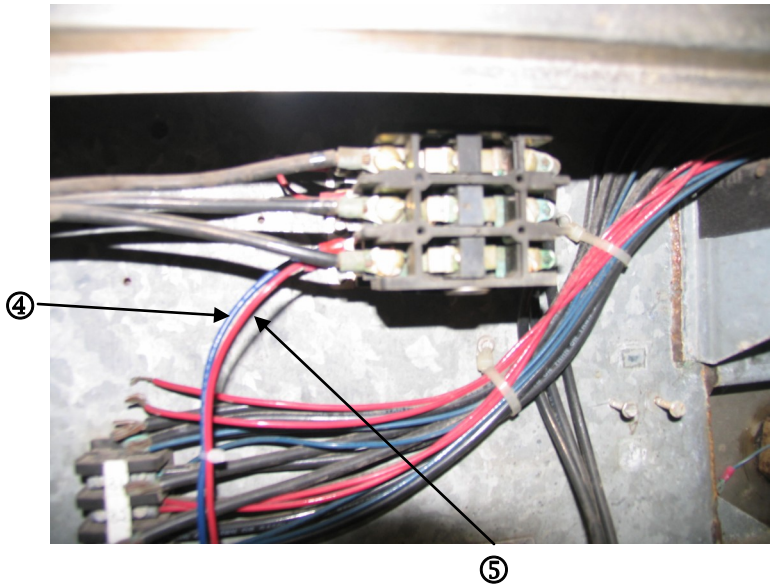
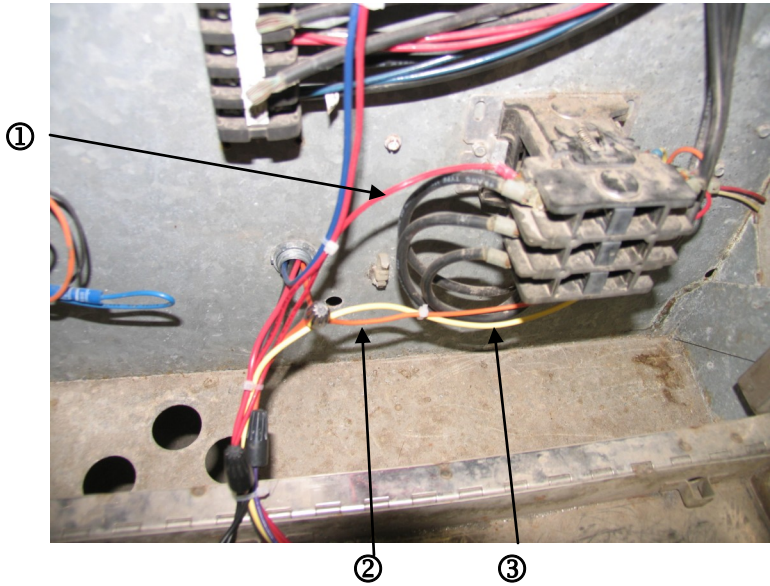
A Partow Temperature Control Conversion **MUST** be accomplished by a qualified technician or service agent according to instructions contained herein.

- A. Turn off three phase and single phase power to fryer.
  - B. Remove Partlow control, probe, plastic tubing, and Sealtite.
  - C. Clean area as good as possible.
2. Drill proper sized holes in element head using template P/N 12A184 for correct location. See diagram below.



# Partlow Conversion Instructions

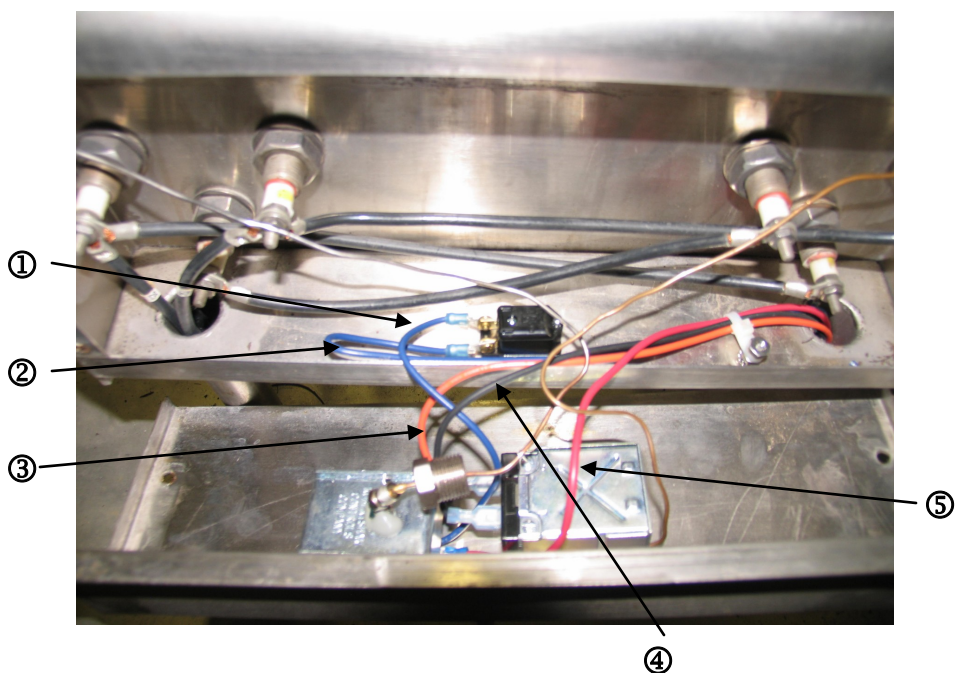
3. Install Door Panel with components and wire.
- a. Install new Sealrite and run the long set of Red, Blue, Black and Orange wires through Sealrite.
  - b. Hook up wires in front of fryer as shown in pictures.



1	Red wire to Red Pilot Lamp
2	Orange wire to Relay and Thermostat
3	Yellow wire to Relay
4	Blue wire to Safety Switch
5	Red wire to Toggle Switch

## Partflow Conversion Instructions

4. Mount Thermostat, Hi-Limit Switch and Safety Switch as shown in picture.



1	Blue wire between Safety Switch and Hi-Limit.
2	Blue wire to Primary Contactor.
3	Orange wire to Relay and Secondary Contactor.
4	Black wire to Relay.
5	Red wire to Toggle Switch.

5. Run Capillary Tubes and Mount Probes as shown in picture.





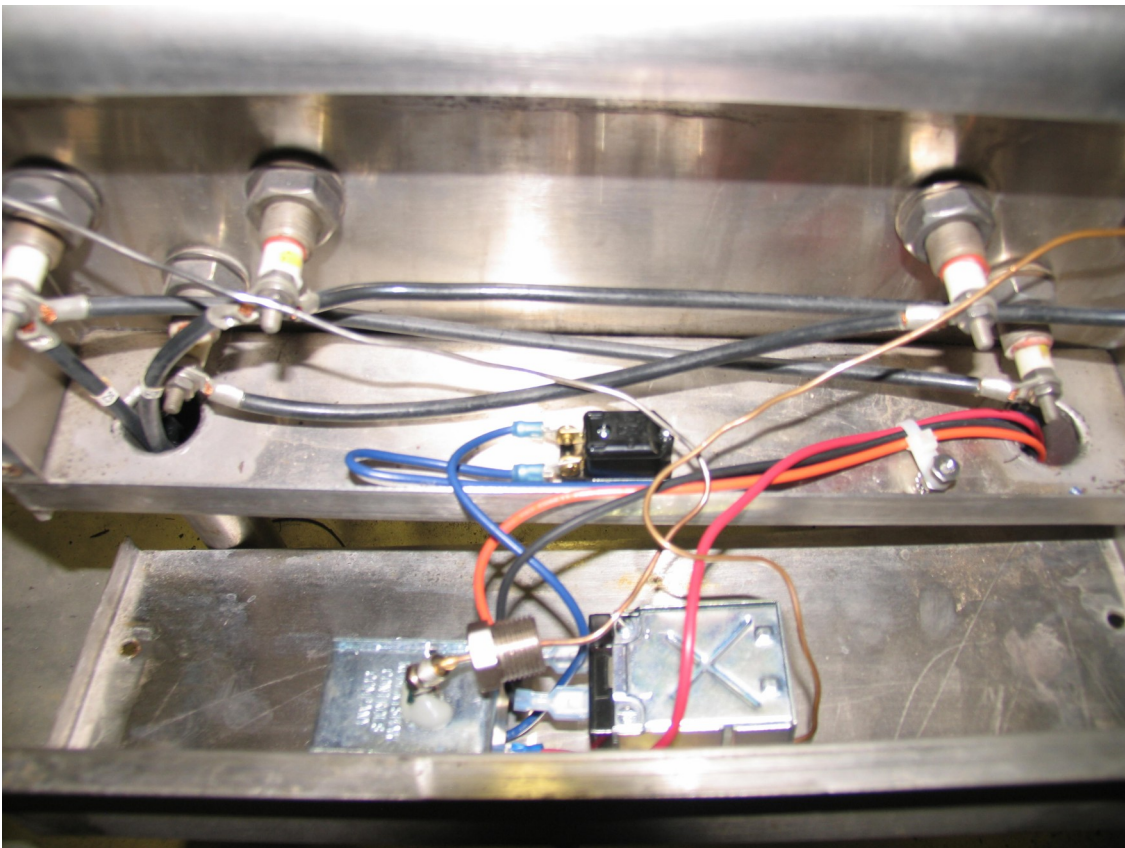
## Partlow Conversion Instructions

---

6. Install Probe Covers as shown in pictures.



7. Make wire connections as required in element head as shown in picture.



- a. Replace element head cover making sure none of the new components are touching the wire connections of the elements.

## Partlow Conversion Instructions

---

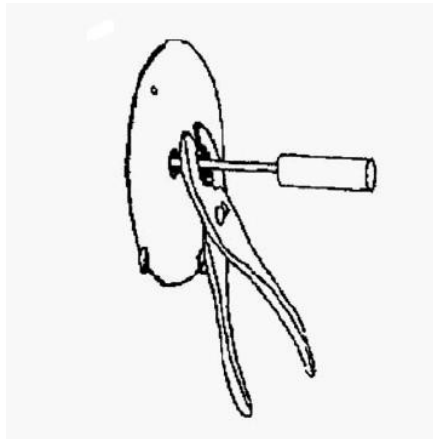
8. After installing Partlow Conversion Kit
  - a. Turn on power to fryer and test for proper operation.
  - b. Calibrate thermostat as needed.

9. How to calibrate thermostat.



CAUTION: DO NOT CHANGE THE THERMOSTAT SETTING WHILE REMOVING THE DIAL.

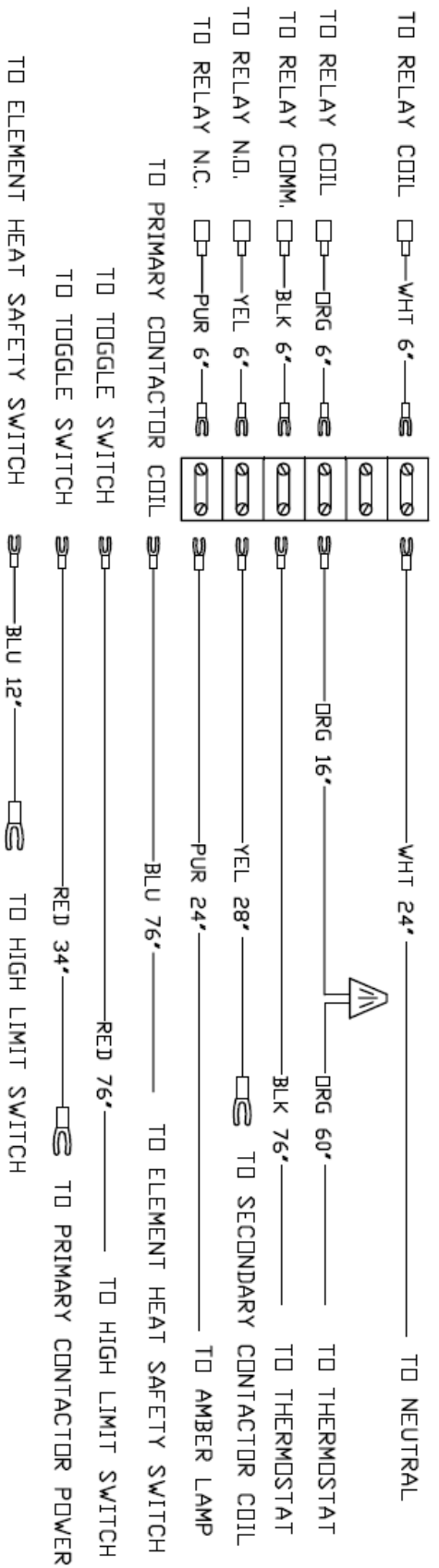
- a. When the thermostat has cycled at least three (3) times, **CAREFULLY** remove the **BLACK** plastic knob from the thermostat shaft to gain access to the **CALIBRATION SCREW** identified below.



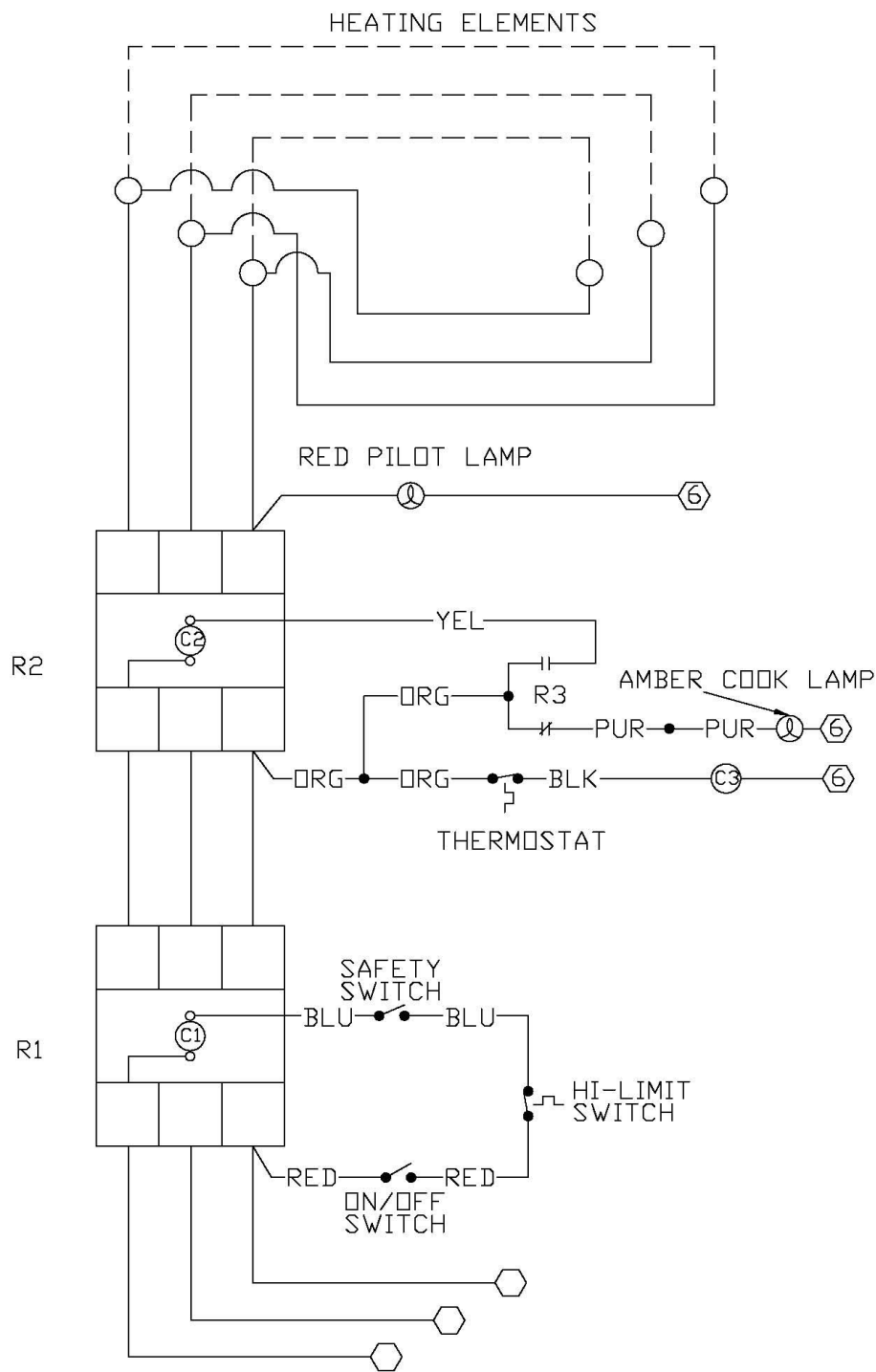
- b. While holding the thermostat shaft stationary with a pair of pliers, use a small screwdriver to adjust the **CALIBRATION** screw as follows:
  1. If the **AVERAGE** temperature is **HIGHER** than the thermostat dial setting, turn the **CALIBRATION SCREW** to the right (clockwise) to lower the average temperature.
  2. If the **AVERAGE** temperature is **LOWER** than the thermostat dial setting, turn the **CALIBRATION** to the left (counter-clockwise) to raise the average temperature.

**NOTE:** Each  $\frac{1}{4}$  turn ( $90^\circ$  rotation) of the Calibration Screw will change the **AVERAGE** temperature  $18^\circ\text{F}$ .

- c. Replace the plastic knob on the thermostat, let the fryer temperature stabilize for about 5 minutes, then re-check the calibration according to the above procedures. If necessary, recalibrate the thermostat until the average temperature is within  $\pm 10^\circ\text{F}$  of the thermostat dial setting.



## PARTLOW CONVERSION DIAGRAM VIEW ONE



**PARTLOW CONVERSION DIAGRAM VIEW TWO**



- I. TECHNICAL ASSISTANCE** - Contact an authorized service agent or the Customer Service Department, Ultrafryer Systems at 1-800-525-8130 for technical assistance.  
E-Mail technical assistance at: techserv@ultrafryer.com

**II. ORDERING INFORMATION:**

- A. REPLACEMENT PARTS** - Provide the following information when ordering replacement parts by phone, fax or mail:

Your company name and phone number

Your company purchase order number

Bill-to address

Ship-to address

Quantity desired

Part number and description of the desired-item Your name or signature of authorized-buyer

Phone in order to: 1-888-331-5013

FAX order to: 1-210-731-5061

Mail order to: Ultrafryer Systems

Order Entry Office

P.O. Box 5369

San Antonio, TX 78201

E-Mail your order to: custserv@ultrafryer.com